

**FD700/FDLL700**  
**FD777/FDLL777**  
Ultra Fast Diodes

- C... 1.0 pF (MAX) @  $V_R = 0$ ,  $f = 1.0$  MHz (FD 700)
- $t_{rr}$ ... 700 ps (MAX) @  $I_f = I_r = 10$  mA,  $R_L = 100 \Omega$  (FD 700)
- CONTROLLED FORWARD CONDUCTANCE

**PACKAGES**

FD700	DO-7
FD777	DO-7
FDLL700	LL-34
FDLL777	LL-34

**ABSOLUTE MAXIMUM RATINGS (Note 1)**

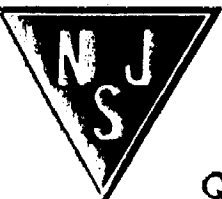
	FD700	FD777
<b>Temperatures</b>		
Storage Temperature Range	-65°C to +200°C	-65°C to +200°C
Max Junction Operating Temperature	+175°C	+175°C
Lead Temperature	+260°C	+260°C
<b>Power Dissipation</b>		
Maximum Total Dissipation at 25°C		
Ambient	250 mW	250 mW
Linear Derating Factor (from 25°C)	1.67 mW/°C	1.67 mW/°C
<b>Maximum Voltages and Currents</b>		
WIV Working Inverse Voltage	20 V	8.0 V
$I_O$ Average Rectified Current	50 mA	50 mA
$I_F$ Forward Current Steady State dc	150 mA	150 mA
$I_f$ Recurrent Peak Forward Current	150 mA	150 mA
$I_f$ (surge) Peak Forward Surge Current		
Pulse Width = 1.0 s	250 mA	250 mA

If you need this device in the SOT package, an electrical equivalent is available. See FDSO1700 family.

**ELECTRICAL CHARACTERISTICS (25°C Ambient Temperature unless otherwise noted)**

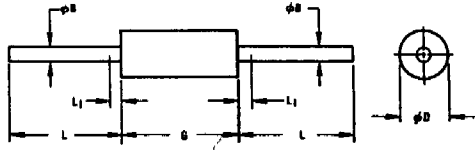
SYMBOL	CHARACTERISTIC	FD700		FD777		UNITS	TEST CONDITIONS
		MIN	MAX	MIN	MAX		
$V_F$	Forward Voltage	0.89	1.10	0.89	1.35	V	$I_F = 50$ mA
		0.81	0.95	0.81	1.00	V	$I_F = 20$ mA
		0.76	0.88	0.76	0.94	V	$I_F = 10$ mA
		0.64	0.74	0.64	0.79	V	$I_F = 1.0$ mA
		0.52	0.61	0.52	0.64	V	$I_F = 0.1$ mA
		0.42	0.50	0.42	0.53	V	$I_F = 0.01$ mA
BV	Breakdown Voltage	30		15		V	$I_R = 5.0 \mu A$
$I_R$	Reverse Current		50		100	nA	$V_R = 20$ V
			50		50	nA	$V_R = 8.0$ V
						$\mu A$	$V_R = 20$ V, $T_A = 150^\circ C$
						$\mu A$	$V_R = 8.0$ V, $T_A = 160^\circ C$
$\tau$	Minority Carrier Lifetime		450		450	ps	(see Note 2)
$t_{rr}$	Reverse Recovery Time (Note 3)		700		750	ps	$I_f = I_r = 10$ mA, $R_L = 100 \Omega$
C	Capacitance		1.0		1.3	pF	$V_R = 0$ , $f = 1.0$ MHz

- NOTES:  
 1. The maximum ratings are limiting values above which life or satisfactory performance may be impaired.  
 2. Measured as suggested by S. M. Krakauer, IRE Proceedings, Volume 60, July 1962, pp. 1674 - 1676.  
 3. Recovery to 0.1  $I_f$ .  
 4. For product family characteristic curves, refer to Chapter 4, D3.



NJ Semi-Conductors reserves the right to change test conditions, parameter limits and package dimensions without notice. Information furnished by NJ Semi-Conductors is believed to be both accurate and reliable at the time of going to press. However, NJ Semi-Conductors assumes no responsibility for any errors or omissions discovered in its use. NJ Semi-Conductors encourages customers to verify that datasheets are current before placing orders.

1007



MILLIMETER DIMENSIONS ARE DERIVED FROM ORIGINAL INCH DIMENSIONS

SYMBOL	INCHES		MILLIMETERS		NOTES
	MIN.	MAX.	MIN.	MAX.	
ϕB	.018	.022	0.458	0.558	-
ϕD	.085	.107	2.16	2.71	1
G	.250	.300	5.85	7.62	1
L	1.000	-	25.40	-	-
L1	-	.050	-	1.27	2

NOTES:

1. PACKAGE CONTOUR OPTIONAL WITHIN CYLINDER OF DIAMETER ϕD AND LENGTH L. SLUGS, IF ANY, SHALL BE INCLUDED WITHIN THIS CYLINDER BUT SHALL NOT BE SUBJECT TO THE MINIMUM LIMIT OF ϕD.
2. LEAD DIAMETER NOT CONTROLLED IN THIS ZONE TO ALLOW FOR FLASH, LEAD FINISH BUILD-UP, AND MINOR IRREGULARITIES OTHER THAN SLUGS.