

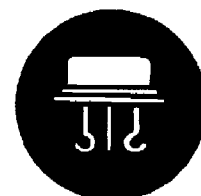
New Jersey Semi-Conductor Products, Inc.

20 STERN AVE.
 SPRINGFIELD, NEW JERSEY 07081
 U.S.A.

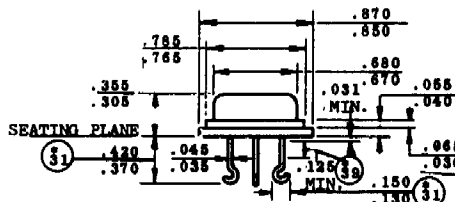
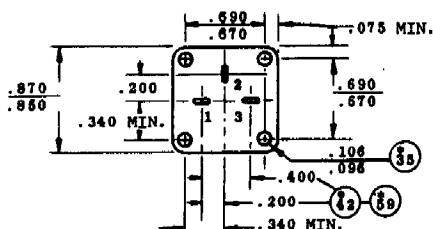
TELEPHONE: (973) 376-2922
 (212) 227-6005
 FAX: (973) 376-8960

2N389 – 2N389A
2N424 – 2N424A
2N1210 – 2N1211
2N1250

TYPE NO.	PT @ 25°C Watts	MAXIMUM RATINGS				hFE		Sat Voltages @				Test Conditions		
		BV _{CB0}	BV _{CE0}	BV _{EB0}	I _c	MIN	MAX	I _c	V _{CE}	V _{CE}	V _{BE}	I _c	I _b	I _{EB0}
		V	V	V	A			A	V	V	V	A	A	ma
2N389	85	60	60	10	3	12	60	1	15	5.0	8.0	1	.2	10
2N389A	85	60	60	10	3	12	60	1	4	.75	1.7	1	.2	10
2N424	85	80	80	10	3	12	60	1	15	10.0	8.0	1	.2	10
2N424A	85	80	80	10	3	12	60	1	4	.75	1.7	1	.2	10
2N1210	60	60	60	8	7.5	15	75	2	12	2.0	3.0	2	.25	1
2N1211	60	80	80	8	7.5	15	75	2	12	2.0	3.0	2	.25	1
2N1250	85	60	60	10	5	15	60	2	12	5.0	4.0	2	.25	10
2N1620	60	80	80	8	5	15	75	2	12	2.0	3.0	2	.25	1
*2N1722	50	175	80	10	5	30	90	2	15	.6	1.2	2	.2	.4
2N2032	85	45	45	5	5	20		2	12	5.0	4.0	2	.25	10
2N2383	85	80	60	8	2	20	60	1.5	4	1	2	1.5	.2	.050



TO-53



NJ Semi-Conductors reserves the right to change test conditions, parameter limits and package dimensions without notice. Information furnished by NJ Semi-Conductors is believed to be both accurate and reliable at the time of going to press. However NJ Semi-Conductors assumes no responsibility for any errors or omissions discovered in its use. NJ Semi-Conductors encourages customers to verify that datasheets are current before placing orders.