

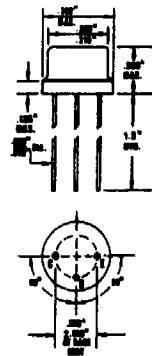
2N439 - 2N439A

NPN HIGH FREQUENCY COMPUTER TRANSISTORS

2N439 and 2N439A are NPN alloy-junction germanium transistors. Their basic NPN nature (high mobility electron flow) renders these transistors capable of very fast response under transient pulse operation. Their design is ideal for switching and flip-flop circuits. They are contained in a welded package equipped with flexible plated leads designed for connection by soldering, welding or socketing. This package has the mechanical dimensions of JETEC outline TO-9. The 2N439A has the base connected to the case internally to provide greater dissipation.

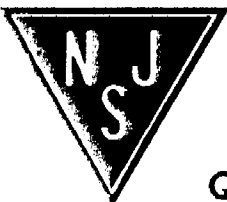
MECHANICAL DATA

JETEC outline	TO-9
JETEC base	E3-51
Case material	Metal
Maximum case length	0.250 inch
Maximum case diameter	0.360 inch
Minimum lead length	1.5 inches
Lead diameter	0.017 inch



ELECTRICAL DATA

RATINGS, ABSOLUTE MAXIMUM AT 25°C	<u>2N439</u>	<u>2N439A</u>
Collector to base voltage, V_{CB}	30	30 Vdc
Emitter to base voltage, V_{EB}	25	25 Vdc
Collector to emitter voltage, V_{CE}	20	20 Vdc
Total dissipation, P	100	150 mW
Derating per °C increase in ambient temperature	1.7	2.5 mW
Operating and storage temperature, T_j		-55 to +85°C



NJ Semi-Conductors reserves the right to change test conditions, parameter limits and package dimensions without notice. Information furnished by NJ Semi-Conductors is believed to be both accurate and reliable at the time of going to press. However, NJ Semi-Conductors assumes no responsibility for any errors or omissions discovered in its use. NJ Semi-Conductors encourages customers to verify that datasheets are current before placing orders.

ELECTRICAL DATA

	<u>Min.</u>	<u>Mode</u>	<u>Max.</u>	<u>Units</u>
STATIC AND LARGE SIGNAL PARAMETERS				
Collector cutoff current, I_{CBO} $V_{CB} = 25 \text{ V}$		2	10	μA_{dc}
Collector cutoff current, I_{CBO} $V_{CB} = 6 \text{ V}, T_A = 75^\circ\text{C}$			150	μA_{dc}
Emitter cutoff current, I_{EBO} $V_{EB} = 25 \text{ V}$		2	10	μA_{dc}
Emitter cutoff current, I_{EBO} $V_{EB} = 6 \text{ V}, T_A = 75^\circ\text{C}$			150	μA_{dc}
Collector-base breakdown voltage, BV_{CBO} $I_C = 100 \mu\text{A}$	30			V _{dc}
Collector-emitter breakdown voltage, BV_{CEO} $I_C = 300 \mu\text{A}$	20			V _{dc}
Current gain, h_{FE} $I_C = 50 \text{ mA}, V_{CE} = 1.0 \text{ V}$	30	45		
Input voltage, V_{EB} $I_C = 50 \text{ mA}, V_{CE} = 1.0 \text{ V}$.32	.7	V _{dc}
Saturation resistance, R_S $I_C = 50 \text{ mA}$		3	5	ohms
TYPICAL SWITCHING CHARACTERISTICS (Note 3)				
Rise time, t_r		.5		μs
Fall time, t_f		.3		μs
Storage time, t_s		.7		μs
LOW FREQUENCY, SMALL SIGNAL PARAMETERS (Note 1)				
Current gain, h_{fe}		35		
Input resistance, h_{ib}		27		ohms
Input resistance, h_{ie}		1500		ohms
HIGH FREQUENCY, SMALL SIGNAL PARAMETERS (Note 2)				
Cutoff frequency, $f_{\alpha b}$	5.0			mc
Collector capacitance, C_C		9	20	μmf
Collector base time constant, $rb'C_C$		2300		μms
Extrinsic base resistance, rb'		220		ohms

ENVIRONMENTAL

Hermetic seal - detergent and water at 60 psi for 1/2 hour.

Drop - 30 inches to maple block, 3 drops.

Shock - 500 g, 7 ms.

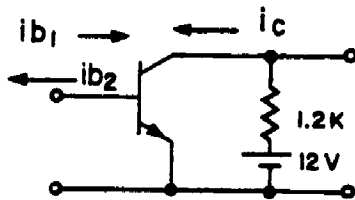
Vibration - 10 g, 100 - 1000 cps.

Lead bend - 3-180 degree bends on leads.

Note 1: $V_{CB} = 6.0 \text{ Vdc}$, $I_E = 1.0 \text{ mA}$, $f = 270 \text{ cps}$

Note 2: $V_{CB} = 6.0 \text{ Vdc}$, $I_E = 1.0 \text{ mA}$, $f = 455 \text{ kc}$

Note 3:



turn-on current $i_{b1} = 1 \text{ mA}$
 turn-off current $i_{b2} = 1 \text{ mA}$
 collector current $i_c = 10 \text{ mA}$

