

20 STERN AVE.
 SPRINGFIELD, NEW JERSEY 07081
 U.S.A.

TELEPHONE: (973) 376-2922
 (212) 227-6005
 FAX: (973) 376-8960

D41D1 D41D7 D41D13
 D41D2 D41D8 D41D14
 D41D4 D41D10
 D41D5 D41D11

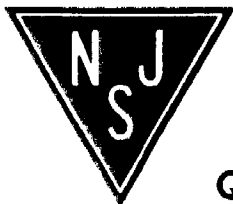
**PNP SILICON
 POWER TRANSISTOR**

| MAXIMUM RATINGS: (T _C =25°C) | SYMBOL | D41D1 | D41D4 | D41D7 | D41D10 | UNITS |
|--|-----------------------------------|-------|-------|-------------|--------|-------|
| | | D41D2 | D41D5 | D41D8 | D41D11 | |
| Collector-Emitter Voltage | V _{CES} | 45 | 60 | 75 | 90 | V |
| Collector-Emitter Voltage | V _{CEO} | 30 | 45 | 60 | 75 | V |
| Emitter-Base Voltage | V _{EBO} | | | 5.0 | | V |
| Continuous Collector Current | I _C | | | 1.0 | | A |
| Peak Collector Current | I _{CM} | | | 1.5 | | A |
| Power Dissipation | P _D | | | 6.25 | | W |
| Operating and Storage Junction Temperature | T _J , T _{stg} | | | -65 to +150 | | °C |
| Thermal Resistance | θ _{JC} | | | 20 | | °C/W |

ELECTRICAL CHARACTERISTICS: (T_C=25°C unless otherwise noted)

| SYMBOL | TEST CONDITIONS | MIN | MAX | UNITS |
|----------------------|--|-----|-----|-------|
| I _{CES} | V _{CE} =Rated V _{CES} | | 100 | nA |
| I _{EBO} | V _{EB} =5.0V | | 100 | nA |
| BV _{CEO} | I _C =10mA (D41D1, 2) | 30 | | V |
| BV _{CEO} | I _C =10mA (D41D4, 5) | 45 | | V |
| BV _{CEO} | I _C =10mA (D41D7, 8) | 60 | | V |
| BV _{CEO} | I _C =10mA (D41D10, 11, 13, 14) | 75 | | V |
| V _{CE(SAT)} | I _C =500mA, I _B =50mA (D41D1, 2, 4, 5) | | 0.5 | V |
| V _{CE(SAT)} | I _C =500mA, I _B =50mA (D41D7, 8, 10, 11, 13, 14) | | 1.0 | V |
| V _{BE(SAT)} | I _C =500mA, I _B =50mA | | 1.5 | V |

| | V _{CE} =2.0V, I _C =100mA | D41D1 | | D41D5 | |
|-----------------|--|-------|-------|-------|--------|
| | | D41D4 | D41D7 | D41D8 | D41D11 |
| h _{FE} | | 50 | 150 | 120 | 360 |
| h _{FE} | V _{CE} =2.0V, I _C =1.0A (Except D40D13, 14) | 10 | - | 20 | - |



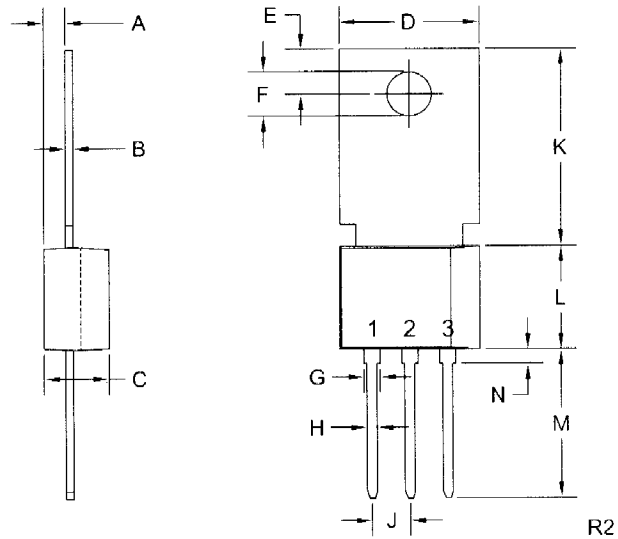
NJ Semi-Conductors reserves the right to change test conditions, parameter limits and package dimensions without notice. Information furnished by NJ Semi-Conductors is believed to be both accurate and reliable at the time of going to press. However, NJ Semi-Conductors assumes no responsibility for any errors or omissions discovered in its use. NJ Semi-Conductors encourages customers to verify that datasheets are current before placing orders.

Quality Semi-Conductors

D41D1 D41D7 D41D13
 D41D2 D41D8 D41D14
 D41D4 D41D10
 D41D5 D41D11

PNP SILICON
 POWER TRANSISTOR

TO-202 CASE - MECHANICAL OUTLINE



| SYMBOL | DIMENSIONS | | | |
|---------|------------|-------|-------------|-------|
| | INCHES | | MILLIMETERS | |
| | MIN | MAX | MIN | MAX |
| A | 0.055 | 0.071 | 1.40 | 1.80 |
| B | 0.016 | 0.024 | 0.40 | 0.60 |
| C | 0.173 | 0.181 | 4.40 | 4.60 |
| D | 0.374 | 0.413 | 9.50 | 10.5 |
| E | 0.118 | 0.154 | 3.00 | 3.90 |
| F (DIA) | 0.124 | 0.150 | 3.15 | 3.80 |
| G | 0.035 | 0.055 | 0.90 | 1.40 |
| H | 0.023 | 0.031 | 0.59 | 0.80 |
| J | 0.094 | 0.106 | 2.39 | 2.69 |
| K | 0.459 | 0.559 | 11.66 | 14.21 |
| L | 0.280 | 0.346 | 7.12 | 8.80 |
| M | 0.406 | 0.531 | 10.3 | 13.5 |
| N | 0.024 | 0.059 | 0.60 | 1.50 |

TO-202 (REV: R2)