

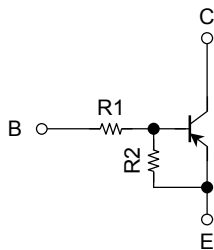
TOSHIBA Transistor Silicon PNP Epitaxial Type (PCT process) (Bias Resistor built-in Transistor)

RN2107FT, RN2108FT, RN2109FT

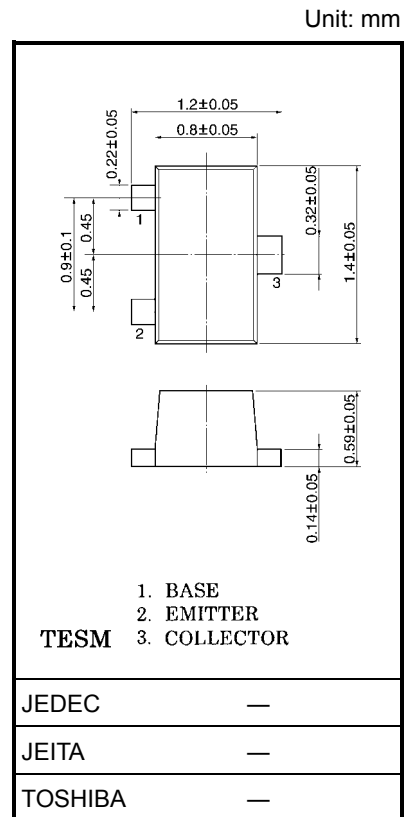
Switching, Inverter Circuit, Interface Circuit and Driver Circuit Applications.

- High-density mount is possible because of devices housed in very thin TESM packages.
- Incorporating a bias resistor into a transistor reduces parts count. Reducing the parts count enable the manufacture of ever more compact equipment and save assembly cost.
- Wide range of resistor values are available to use in various circuit designs.
- Complementary to RN1107FT, RN1108FT, RN1109FT

Equivalent Circuit and Bias Resistor Values



Type No.	R1 (kΩ)	R2 (kΩ)
RN2107FT	10	47
RN2108FT	22	47
RN2109FT	47	22



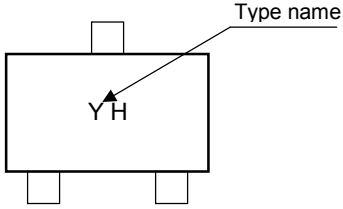
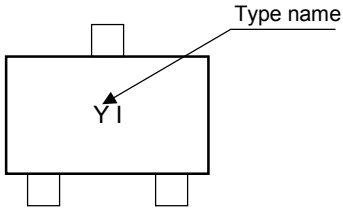
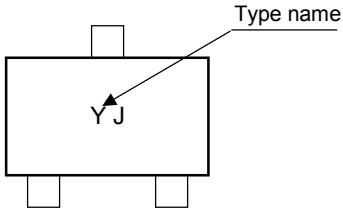
Weight: g (typ.)

Maximum Ratings (Ta = 25°C)

Characteristics		Symbol	Rating	Unit
Collector-base voltage	RN2107FT~2109FT	V _{CB0}	-50	V
Collector-emitter voltage		V _{CEO}	-50	V
Emitter-base voltage	RN2107FT	V _{EBO}	-6	V
	RN2108FT		-7	
	RN2109FT		-15	
Collector current	RN2107FT~2109FT	I _C	-100	mA
Collector power dissipation		P _C	100	mW
Junction temperature		T _J	150	°C
Storage temperature range		T _{stg}	-55~150	°C

Electrical Characteristics (Ta = 25°C)

Characteristics		Symbol	Test Condition	Min	Typ.	Max	Unit
Collector cut-off current	RN2107FT~2109FT	I_{CBO}	$V_{CB} = -50\text{ V}, I_E = 0$	—	—	-100	nA
		I_{CEO}	$V_{CE} = -50\text{ V}, I_B = 0$	—	—	-500	
Emitter cut-off current	RN2107FT	I_{EBO}	$V_{EB} = -6\text{ V}, I_C = 0$	-0.081	—	-0.15	mA
	RN2108FT		$V_{EB} = -7\text{ V}, I_C = 0$	-0.078	—	-0.145	
	RN2109FT		$V_{EB} = -15\text{ V}, I_C = 0$	-0.167	—	-0.311	
DC current gain	RN2107FT	h_{FE}	$V_{CE} = -5\text{ V}, I_C = -10\text{ mA}$	80	—	—	
	RN2108FT			80	—	—	
	RN2109FT			70	—	—	
Collector-emitter saturation voltage	RN2107FT~2109FT	$V_{CE(sat)}$	$I_C = -5\text{ mA}, I_B = -0.25\text{ mA}$	—	-0.1	-0.3	V
Input voltage (ON)	RN2107FT	$V_{I(ON)}$	$V_{CE} = -0.2\text{ V}, I_C = -5\text{ mA}$	-0.7	—	-1.8	V
	RN2108FT			-1.0	—	-2.6	
	RN2109FT			-2.2	—	-5.8	
Input voltage (OFF)	RN2107FT	$V_{I(OFF)}$	$V_{CE} = -5\text{ V}, I_C = -0.1\text{ mA}$	-0.5	—	-1.0	V
	RN2108FT			-0.6	—	-1.16	
	RN2109FT			-1.5	—	-2.6	
Transition frequency	RN2107FT~2109FT	f_T	$V_{CE} = -10\text{ V}, I_C = -5\text{ mA}$	—	200	—	V
Collector output capacitance	RN2107FT~2109FT	C_{ob}	$V_{CB} = -10\text{ V}, I_E = 0, f = 1\text{ MHz}$	—	3	6	pF
Input resistor	RN2107FT	R1	—	7	10	13	k Ω
	RN2108FT			15.4	22	28.6	
	RN2109FT			32.9	47	61.1	
Resistor ratio	RN2107FT	R1/R2	—	0.919	0.213	0.232	
	RN2108FT			0.421	0.468	0.515	
	RN2109FT			1.92	2.14	2.35	

Type Name	Marking
RN1107FT	 A schematic diagram of a rectangular component with a top terminal and two bottom terminals. The marking 'YH' is centered on the component. An arrow labeled 'Type name' points to the 'YH' marking.
RN1108FT	 A schematic diagram of a rectangular component with a top terminal and two bottom terminals. The marking 'YI' is centered on the component. An arrow labeled 'Type name' points to the 'YI' marking.
RN1109FT	 A schematic diagram of a rectangular component with a top terminal and two bottom terminals. The marking 'YJ' is centered on the component. An arrow labeled 'Type name' points to the 'YJ' marking.

RESTRICTIONS ON PRODUCT USE

000707EAA

- TOSHIBA is continually working to improve the quality and reliability of its products. Nevertheless, semiconductor devices in general can malfunction or fail due to their inherent electrical sensitivity and vulnerability to physical stress. It is the responsibility of the buyer, when utilizing TOSHIBA products, to comply with the standards of safety in making a safe design for the entire system, and to avoid situations in which a malfunction or failure of such TOSHIBA products could cause loss of human life, bodily injury or damage to property.
In developing your designs, please ensure that TOSHIBA products are used within specified operating ranges as set forth in the most recent TOSHIBA products specifications. Also, please keep in mind the precautions and conditions set forth in the "Handling Guide for Semiconductor Devices," or "TOSHIBA Semiconductor Reliability Handbook" etc..
- The TOSHIBA products listed in this document are intended for usage in general electronics applications (computer, personal equipment, office equipment, measuring equipment, industrial robotics, domestic appliances, etc.). These TOSHIBA products are neither intended nor warranted for usage in equipment that requires extraordinarily high quality and/or reliability or a malfunction or failure of which may cause loss of human life or bodily injury ("Unintended Usage"). Unintended Usage include atomic energy control instruments, airplane or spaceship instruments, transportation instruments, traffic signal instruments, combustion control instruments, medical instruments, all types of safety devices, etc.. Unintended Usage of TOSHIBA products listed in this document shall be made at the customer's own risk.
- The information contained herein is presented only as a guide for the applications of our products. No responsibility is assumed by TOSHIBA CORPORATION for any infringements of intellectual property or other rights of the third parties which may result from its use. No license is granted by implication or otherwise under any intellectual property or other rights of TOSHIBA CORPORATION or others.
- The information contained herein is subject to change without notice.