

SKiiP 132GDL120-412CTV

I. Power section brake chopper

Absolute maximum ratings		$T_s = 25^\circ\text{C}$ unless otherwise specified	
Symbol	Conditions	Values	Units
IGBT			
V_{CES}	Operating DC link voltage	1200	V
$V_{CC}^{1)}$		900	V
V_{GES}		± 20	V
I_C		$T_s = 25 (70)^\circ\text{C}$	150 (112,5)
Inverse diode			
$I_F = -I_C$	$T_s = 25 (70)^\circ\text{C}$	150 (112,5)	A
I_{FSM}	$T_j = 150^\circ\text{C}$, $t_p = 10\text{ms}$; sin	1440	A
I^2t (Diode)	Diode, $T_j = 150^\circ\text{C}$, 10ms	10	kA^2s
$T_j, (T_{stg})$	AC, 1min.	-40 (-25) ... +150 (125)	$^\circ\text{C}$
V_{isol}		3000	V

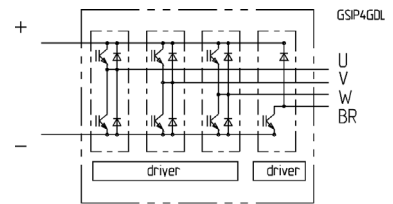
Characteristics		$T_s = 25^\circ\text{C}$ unless otherwise specified			
Symbol	Conditions	min.	typ.	max.	Units
IGBT					
V_{CESat}	$I_C = 125\text{A}$, $T_j = 25 (125)^\circ\text{C}$	-	2,6 (3,1)	3,1	V
V_{CEO}	$T_j = 25 (125)^\circ\text{C}$	-	1,2 (1,3)	1,5 (1,6)	V
r_{CE}	$T_j = 25 (125)^\circ\text{C}$	-	10,5 (14,0)	12,6 (16,1)	$\text{m}\Omega$
I_{CES}	$V_{GE}=0, V_{CE}=V_{CES}, T_j=25(125)^\circ\text{C}$	-	(10)	0,4	mA
$E_{on} + E_{off}$	$I_C=125\text{A}$, $V_{CC}=600\text{V}$	-	-	38	mJ
	$T_j=125^\circ\text{C}$, $V_{CC}=900\text{V}$	-	-	66	mJ
R_{CC-EE}	terminal chip, $T_j = 125^\circ\text{C}$	-	0,50	-	$\text{m}\Omega$
L_{CE}	top, bottom	-	15,0	-	nH
C_{CHC}	per phase, AC-side	-	1,4	-	nF
Inverse diode					
$V_F = V_{EC}$	$I_F = 150\text{A}$; $T_j = 25(125)^\circ\text{C}$	-	2,1 (1,9)	2,6	V
V_{TO}	$T_j = 25 (125)^\circ\text{C}$	-	1,3 (1,0)	1,4 (1,1)	V
r_T	$T_j = 25 (125)^\circ\text{C}$	-	5,0 (6,0)	6,8 (7,8)	$\text{m}\Omega$
E_{RR}	$I_C=125\text{A}$, $V_{CC}=600\text{V}$	-	-	6	mJ
	$T_j=125^\circ\text{C}$, $V_{CC}=900\text{V}$	-	-	8	mJ
Mechanical data					
M_{dc}	DC terminals, SI Units	6	-	8	Nm
M_{ac}	AC terminals, SI Units	13	-	15	Nm
w	SKiiP [®] 2 System w/o heat sink	-	3,5	-	kg
w	heat sink	-	8,5	-	kg
Thermal characteristics (P16 heat sink; 275 m^3/h); "r" reference to temperature sensor					
$R_{thjrlGBT}$	per IGBT	-	-	0,180	K/W
$R_{thjrdiode}$	per diode	-	-	0,375	K/W
R_{thra}	per module	-	-	0,036	K/W
Z_{th}	R_i (mK/W) (max.)	τ_{au_i} (s)			
		1	2	3	4
$IGBT_{jr}$		20	139	22	-
$diode_{jr}$		41	289	45	-
$heatsink_{ra}$		1,7	24,0	7,6	2,6

SKiiP[®] 2

SK integrated intelligent Power 7-pack

SKiiP 132GDL120-412CTV

Case S5



Features

- SKiiP technology inside
- low loss IGBTs
- CAL diode technology
- integrated current sensor
- integrated temperature sensor
- integrated heat sink
- IEC 60721-3-3 (humidity) class 3K3/IE32 (SKiiP[®] 2 System)
- IEC 68T.1 (climate) 40/125/56 (SKiiP[®] 2 power section)

1) with assembly of suitable MKP capacitor per terminal (SEMIKRON type is recommended)

This technical information specifies semiconductor devices but promises no characteristics. No warranty or guarantee, expressed or implied is made regarding delivery, performance or suitability.

SKiiP 132GDL120-412CTV

SKiiP 2®

SK integrated intelligent Power

SKiiP 132GDL120-412CTV

II. Integrated gate driver brake chopper

Absolute maximum ratings			
Symbol	Term	Value	Unit
V _{S1}	stabilized 15V power supply	18	V
V _{S2}	unstabilized 24V power supply	30	V
V _{iH}	input signal voltage (high)	15 + 0,3	V
dv/dt	secondary to primary side	75	kV/μs
V _{isolIO}	input / output (AC)	3000	Vac
V _{isol12}	output 1 / output 2 (AC)	1500	Vac
f _{max}	switching frequency	5	kHz
T _{op} (T _{stg})	operating / storage temperature	- 25 ... + 85	°C

Gate driver features

- CMOS compatible inputs
- wide range power supply
- integrated circuitry to sense phase current, heat sink temperature and DC-bus voltage (option)
- short circuit protection
- over current protection
- over voltage protection (option)
- power supply protected against under voltage
- interlock of top/bottom switch
- isolation by transformers
- fibre optic interface (option for GB-types only)
- IEC 68T.1 (climate) 25/85/56 (SKiiP® 2 gate driver)

Electrical characteristics (T _a = 25 °C)				Values				
Symbol	Term				min	typ	max.	Units
V _{S1}	supply voltage stabilized				14,4	15	15,6	V
V _{S2}	supply voltage non stabilized				20	24	30	V
I _{S1}	V _{S1} = 15V	67 + 10*f / f _{max} + 0,0* (I _{AC} /A)						mA
I _{S2}	V _{S2} = 24V	67 + 10*f / f _{max} + 0,0* (I _{AC} /A)						mA
V _{iT+}	input threshold voltage (High)				11,2	-	-	V
V _{iT-}	input threshold voltage (Low)				-	-	5,4	V
R _{in}	input resistance				-	10	-	kΩ
t _{d(on)IO}	turn-on propagation time (system)				-	20,2	-	μs
t _{d(off)IO}	turn-off propagation time (system)				-	25,6	-	μs
t _{pERRRESET}	error memory reset time				300000	-	-	μs
t _{TD}	top/bottom switch: interlock time				-	-	-	μs
I _{analogOUT}	8 V corresponds to max. current of 15 V supply voltage (available when supplied with 24V)				-	n.a.	-	A
I _{Vs1outmax}					-	-	n.a.	mA
I _{AOmax}	output current at pin -				-	-	n.a.	mA
V _{ol}	logic low output voltage				-	-	0,6	V
V _{oH}	logic high output voltage				-	-	30	V
I _{TRIPSC}	over current trip level (I _{analog OUT} = 10V)				-	-	-	A
I _{TRIPLG}	ground fault protection				-	-	-	A
T _{ip}	over temperature protection				110	-	120	°C
U _{DCTRIP}	trip level of U _{DC} -protection (U _{analog OUT} = 9V); (option)				-	-	-	V

For electrical and thermal design support please use SEMISEL. Access to SEMISEL is via SEMIKRON website <http://semisel.semikron.com>. Further questions can be placed via <http://faq.semikron.com/>.

This technical information specifies semiconductor devices but promises no characteristics. No warranty or guarantee expressed or implied is made regarding delivery, performance or suitability.